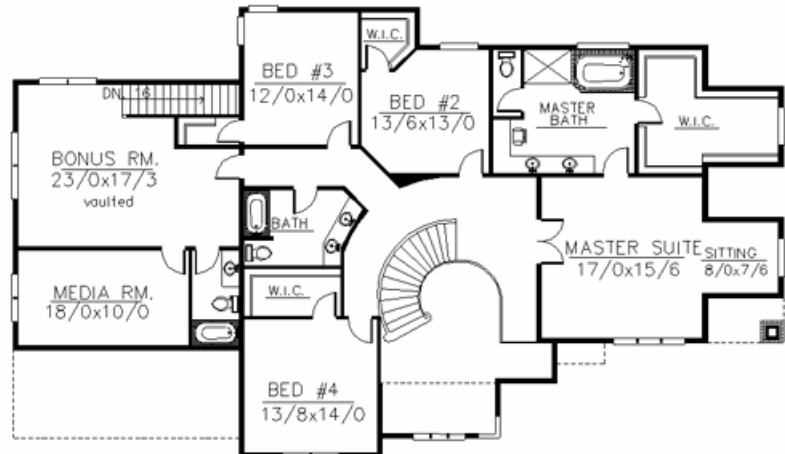
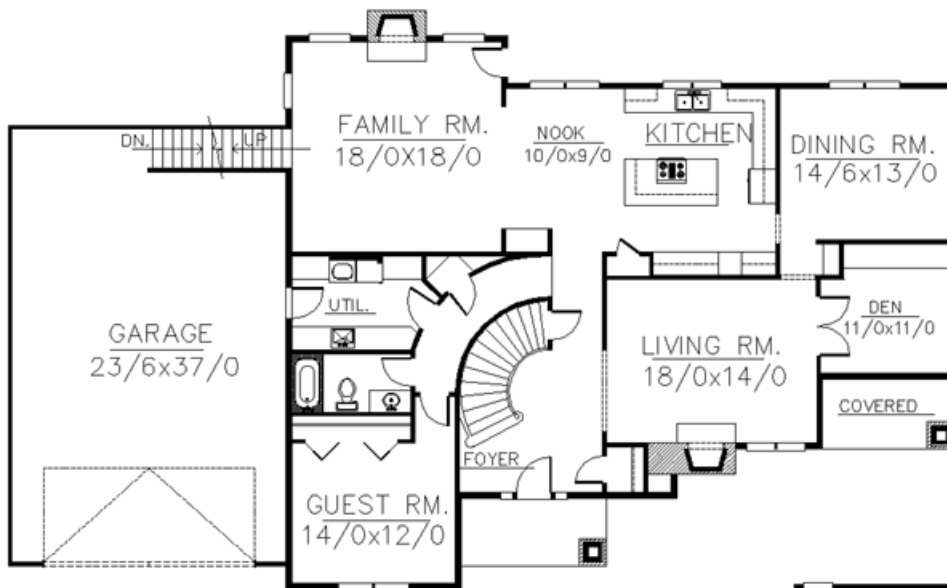
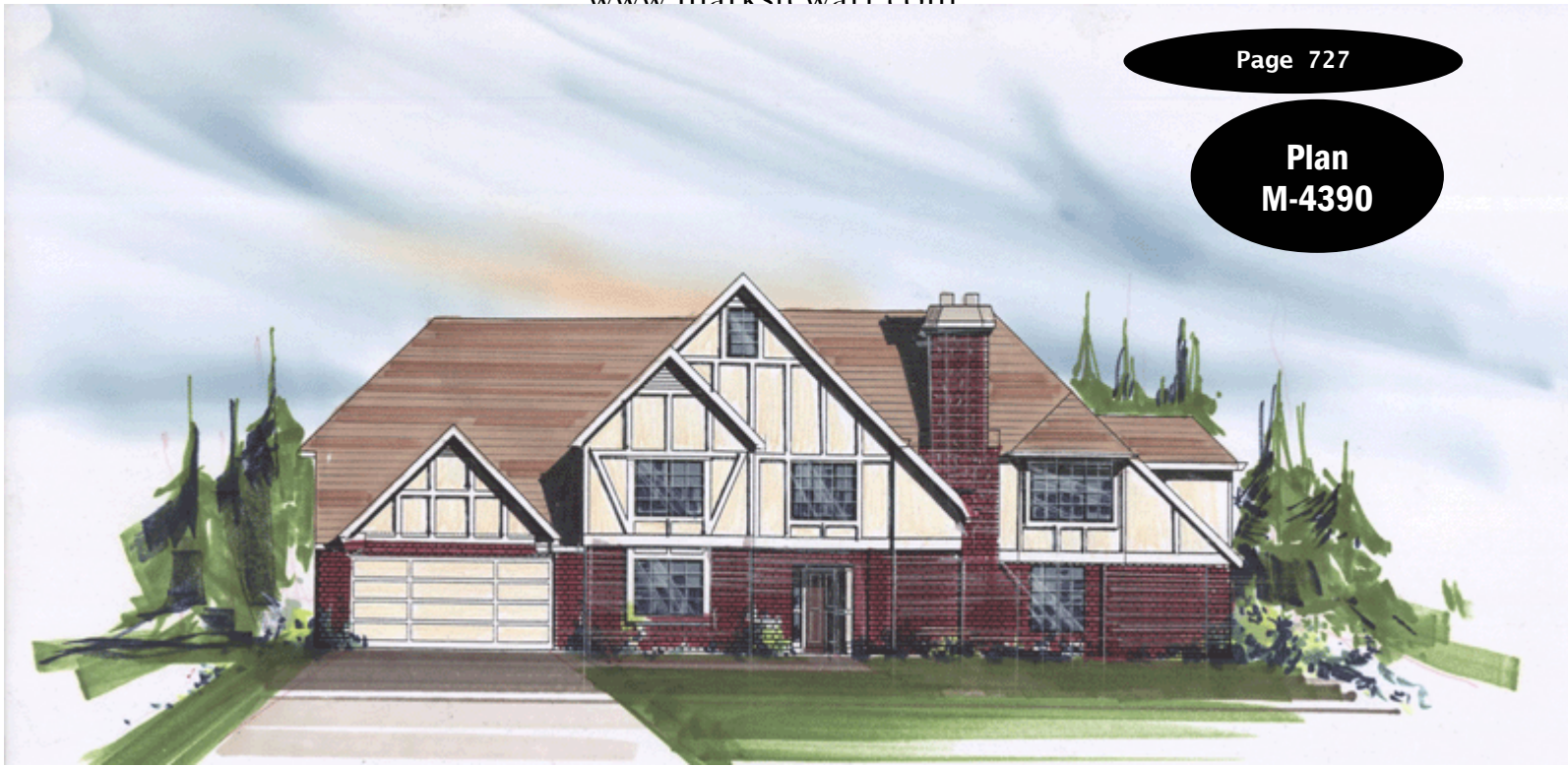


Plan
M-4390



Plan
M-4390

81/0 wide x 47/0 deep
4,390 sq. ft.

"Old World charm and elegance in a classy design that is time tested. Look closely and you will see a magnificent floor plan with today's family in mind. From The oversized family room kitchen complex to the convenient guest quarters opposite the formal living room its all here. The garage is double deep allowing for up to four parking spaces, and there is even a shop on the lower level."