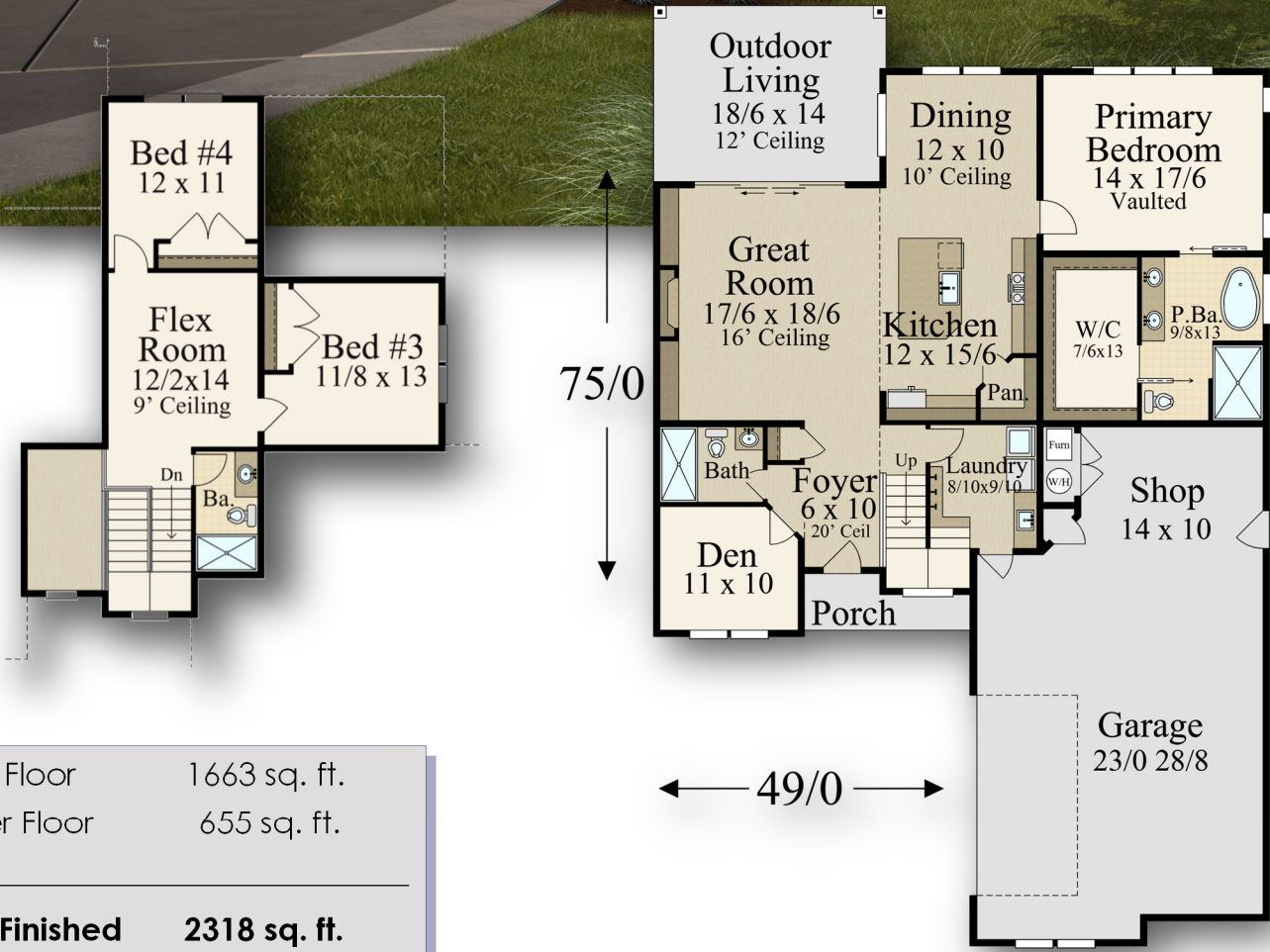
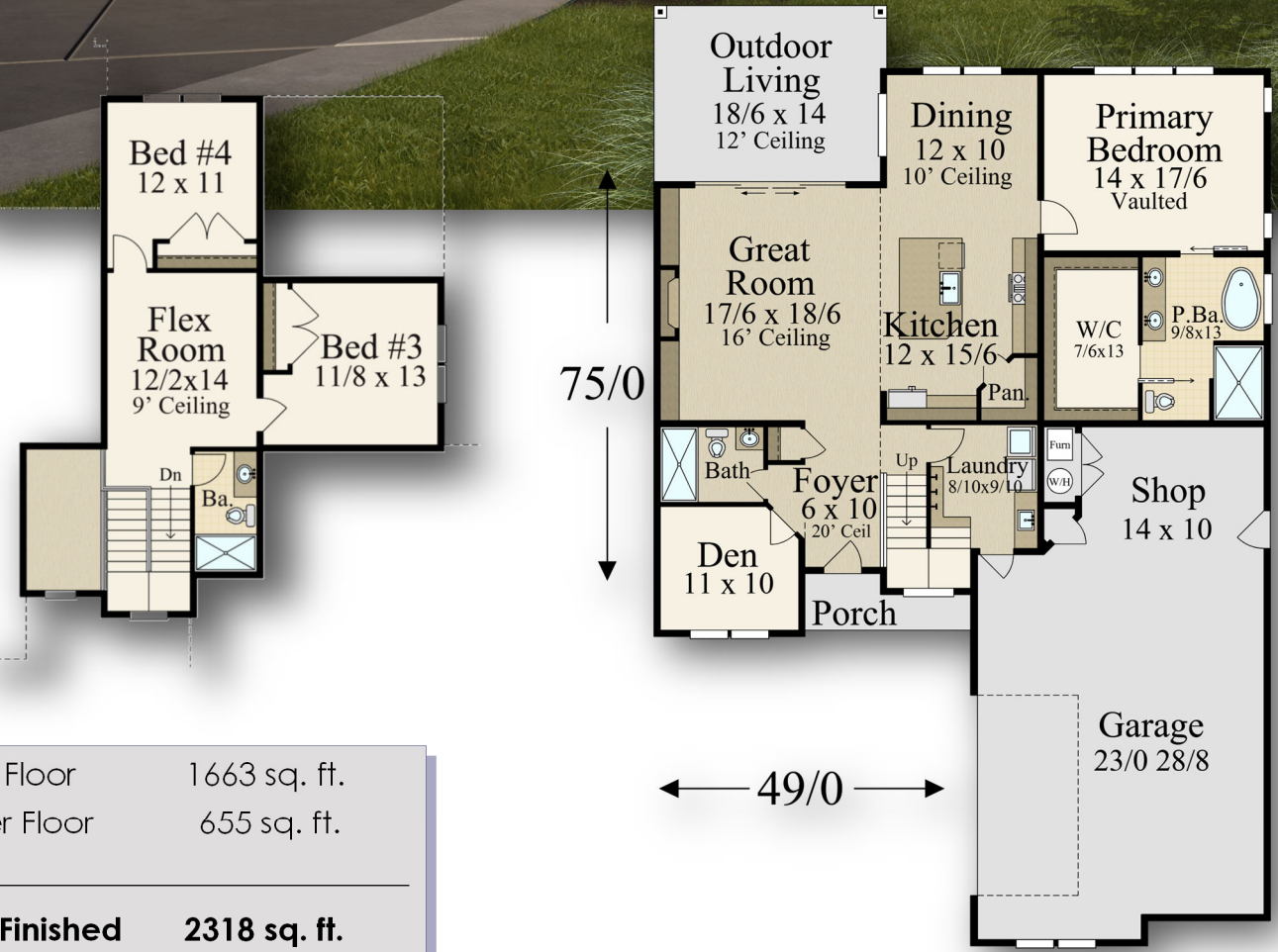




"Gold Bar" MSAP-2318



Main Floor	1663 sq. ft.
Upper Floor	655 sq. ft.
Total Finished	2318 sq. ft.
49/0 wide x 75/0 deep	



Main Floor	1663 sq. ft.
Upper Floor	655 sq. ft.
Total Finished	2318 sq. ft.
49/0 wide x 75/0 deep	