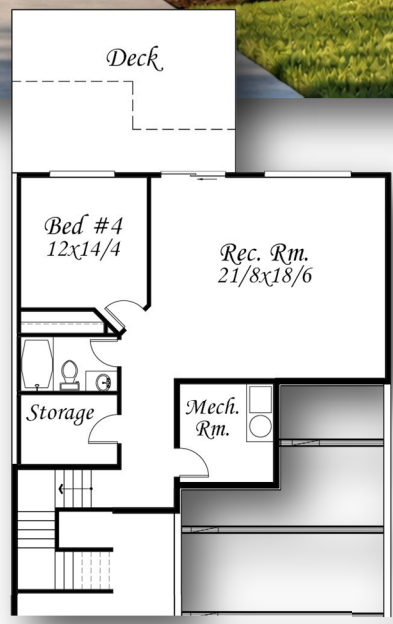
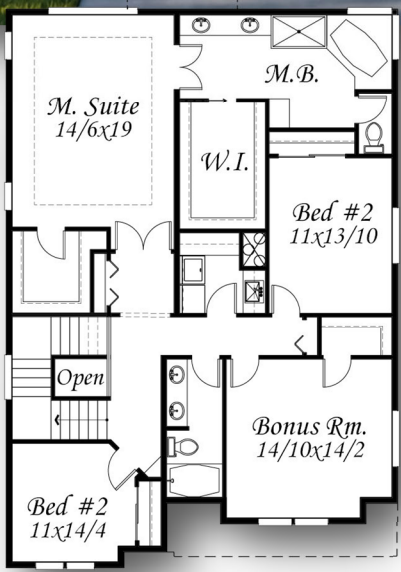
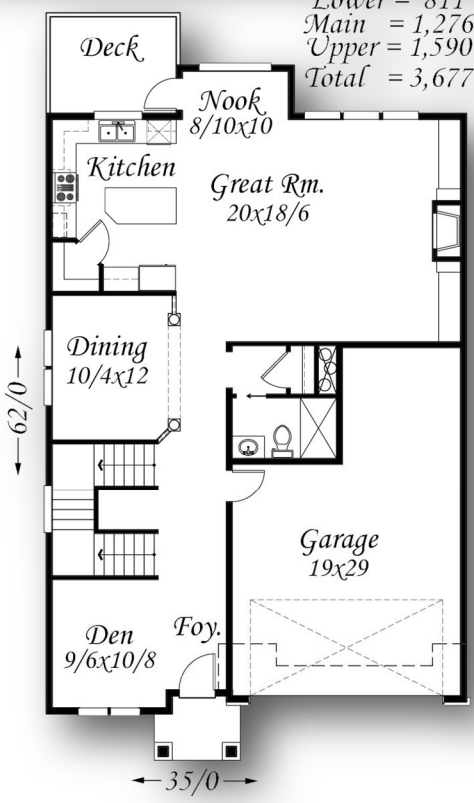


Lower = 811  
 Main = 1,276  
 Upper = 1,590  
 Total = 3,677 Sq. Ft.



## “Brilliant P” MM-3677-EP



Main Floor	1,507 sq. ft.
Upper Floor	1,222 sq. ft.
Lower Floor	943 sq. ft.
<b>Total</b>	<b>3,655 Sq. ft.</b>
<b>49/0 W x 60/2 D</b>	